

LOST HOTELS - a postcard series

When I first heard about the **LAMEROO BEACH HOTEL** or even more nostalgically, the Royal Beach Hotel at Lameroo I believed it had existed and it did but not in the sense it did in my imagination - later when I met Steve Fox I found out he'd been a guest there, it went in the cyclone. I often walked on Lameroo Beach and always came home with pockets full of well water washed glass. Other wonderful romantic sounding seaside hotels also went in the cyclone, **THE SEABREEZE** at Nightcliff and were it not for that one evocative photograph of Russell Drysdale's "Alf at the Seabreeze" I would have doubted its existence too, but I am sure about **THE FANNIE BAY HOTEL** because at the Red Cross shop in Larrakeyah I found a cache of silver plated seafood cocktail dishes engraved FBH which on further inquiry I learnt had come from John Spellman who had salvaged them after the cyclone. Of all these Lost Hotels I only really knew **THE HOTEL DARWIN**. It had survived the bombing of Darwin and was reroofed after the cyclone, I was told that a lot of trouble was taken to match the distinctive blue tiles. I happened to be visiting last year on the fateful night it was demolished and the next day I went prowling outside the cyclone wire and black plastic fence to see if I could find a blue roof tile and all I found were these miniscule shards so thorough and mean was the demolition.

They don't build hotels on the seafront in Darwin anymore and today as I drive along Beach Rd on Port Phillip Bay there is one house that I swear has a roof tiled in that same blue.

SUZANNE SPUNNER, St Kilda

**LAMEROO
BEACH**



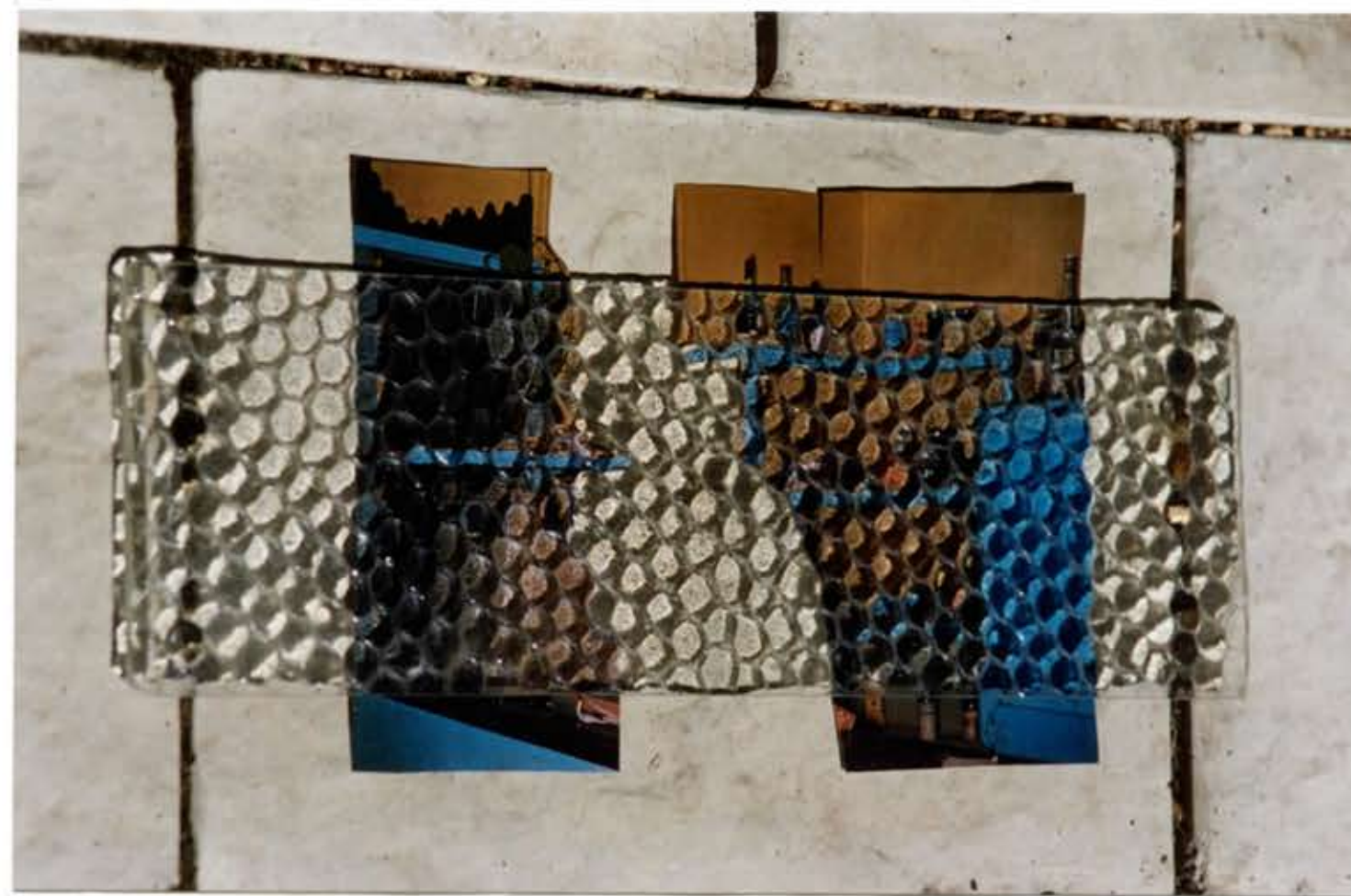
LOST HOTEL I



SEABREEZE



LOST HOTEL II



FANNIE BAY



LOST HOTEL III

SS 2000



**HOTEL
DARWIN**



LOST HOTEL IV

