



# Rover Thomas Provenance Research: Serendipity, Synchronicity and Savage Dogs

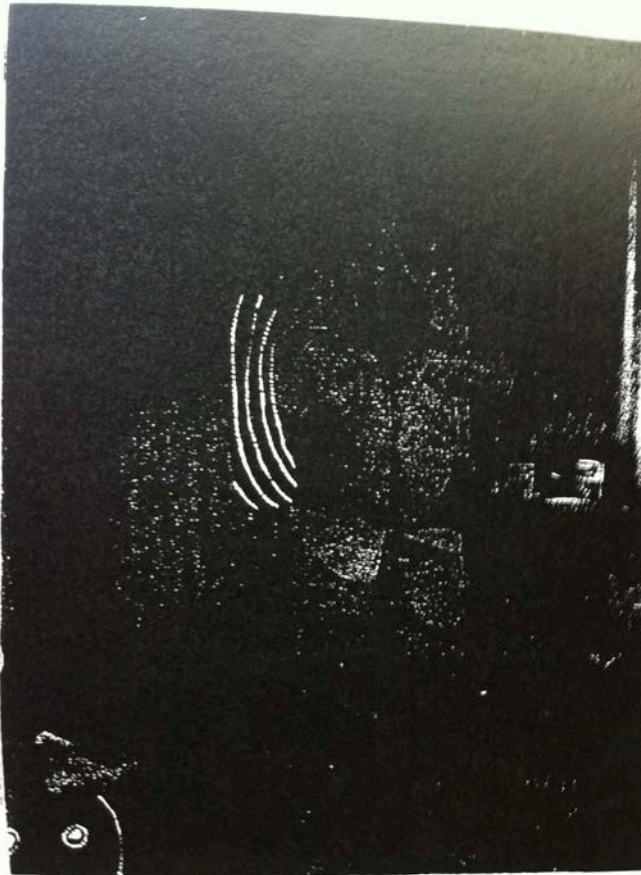
Suzanne Spinner



- East Kimberley Early Boards
  - c1978 Paddy Jaminji
    - c1979 Hector Jandany
      - 1982 George Mung Mung
        - 1983 Rover Thomas
          - ?Jack Britten



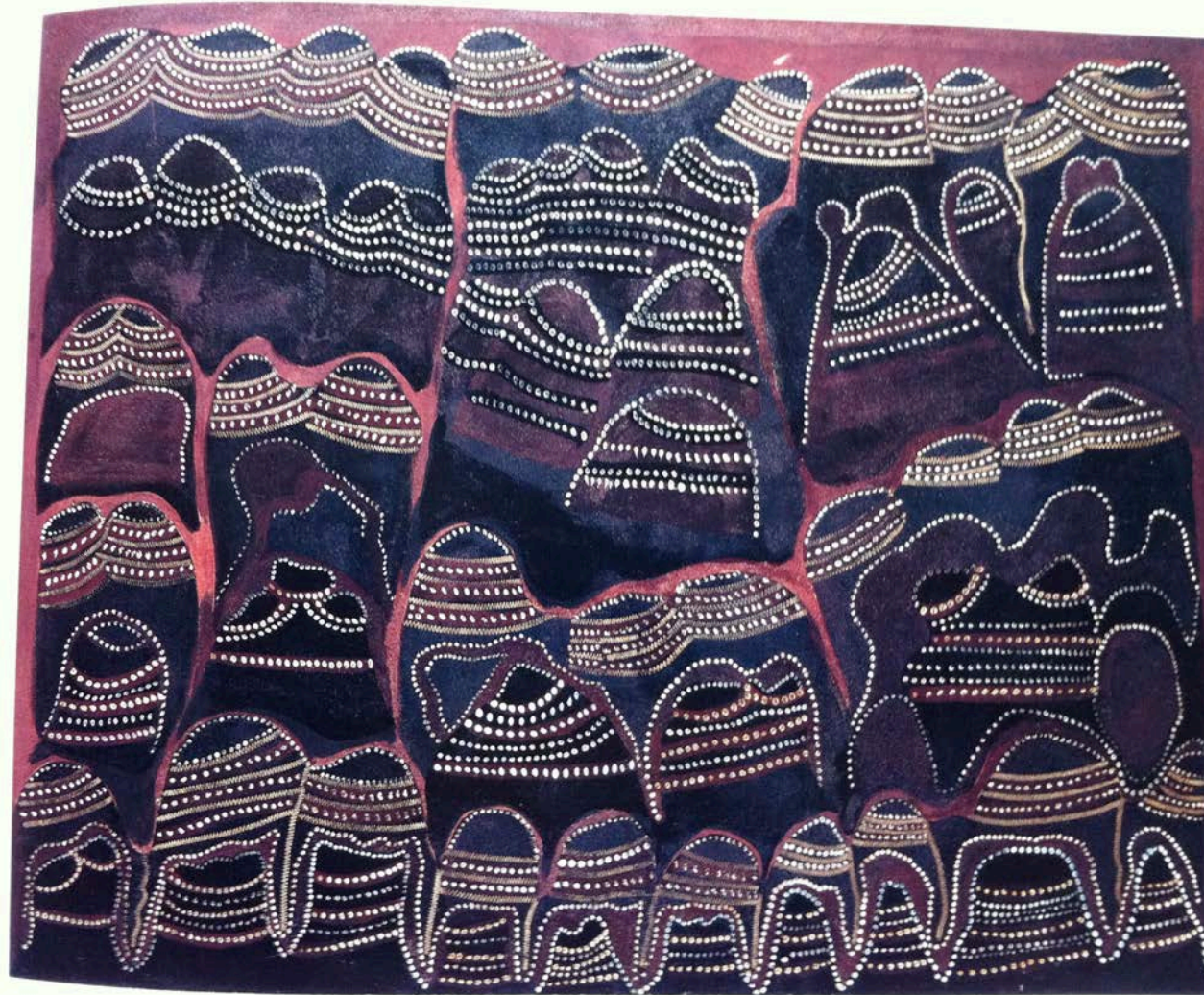
## Jack Britten's 'first' painting undated photo unknown photographer



*Figure 3.1: Undated photo of Gija painter Jack Britten posing with a shield and what he describes as his "first" painting, which just visible at the lower left. The image in this painting is similar to depictions of spirits on early *Goorirr Goorirr* boards (photo courtesy of Jack Britten)*



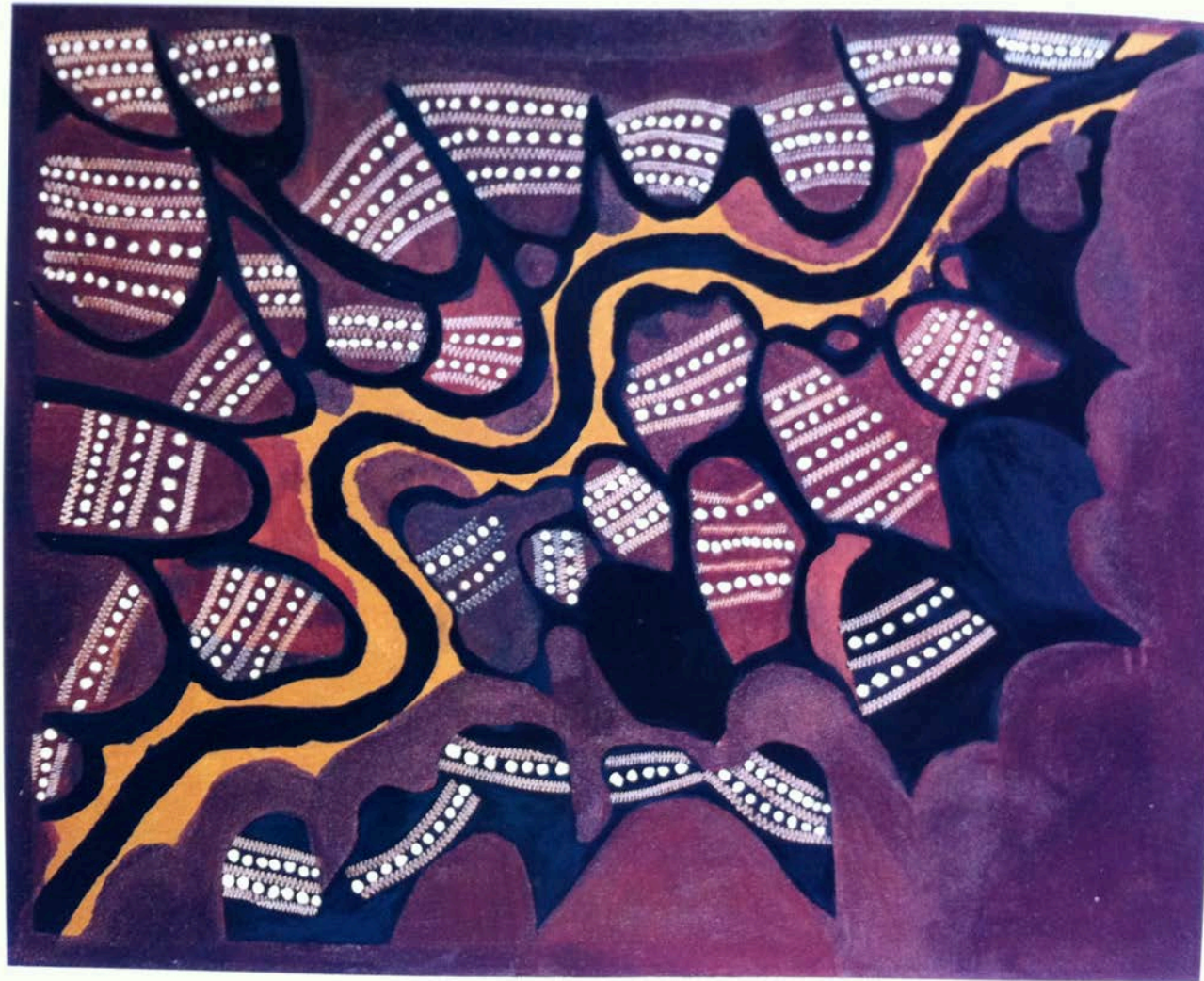
## Jack Britton – Purnululu Country 1989



Judith Ryan 1993 *Images of Power Aboriginal Art of the Kimberley*, NGV



# Jack Britten – Ord River Country 1991



Judith Ryan 1993 *Images of Power Aboriginal Art of the Kimberley*, NGV



# Bruny Island: Home of Savage Dogs



Photo: Stephanie Cotteret *Bruny Island*



## Savage dog straining at leash





# Jack Britten – Woorreranginy Country 1991



Judith Ryan 1993 *Images of Power Aboriginal Art of the Kimberley*, NGV





## Jack Britten with his first painting



Photo: Rimas Riauba



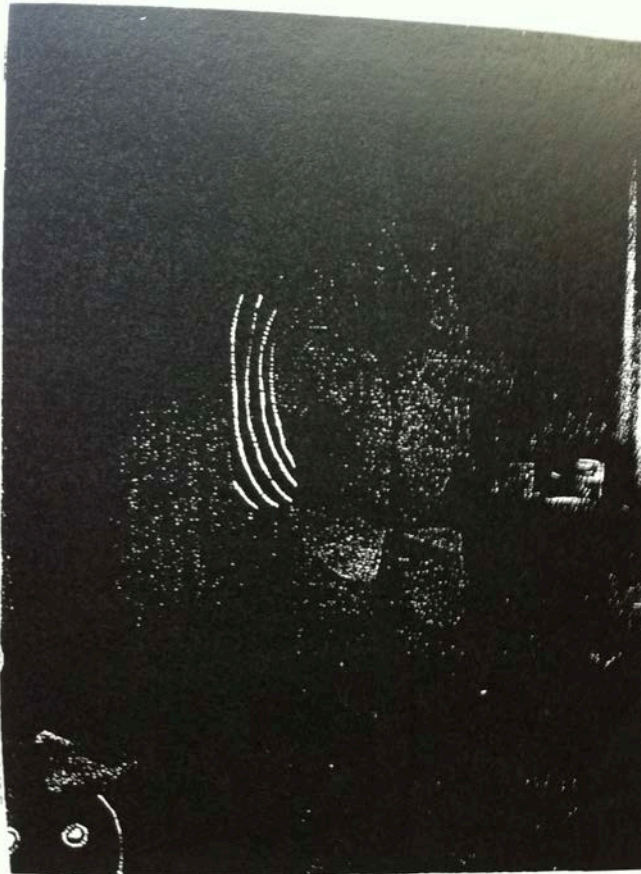
## Jack Britten with his first painting



Photo: Rimas Riauba 1988



## Jack Britten with his first painting photo Rimas Riauba 1988



*Figure 3.1:* Undated photo of Gija painter Jack Britten posing with a shield and what he describes as his "first" painting, which just visible at the lower left. The image in this painting is similar to depictions of spirits on early *Goorirr Goorirr* boards (photo courtesy of Jack Britten)



## Paddy Jaminji's calm camp dogs



Photo: Rimas Riauba 1988



THE UNIVERSITY OF  

---

MELBOURNE