

HIS OWN SPECIAL FRIEND

A one-hour rehearsed reading theatre presentation about the history of homosexual men in the Northern Territory.



TWO PERFORMANCES ONLY AT BROWNS MART

11.15 pm on SATURDAY 12 JUNE

10.00 pm on SUNDAY 13 JUNE

This work provides an insight into the rubbing edge between frontier men of diverse sexuality and the development of a gay sensibility in one of Australia's most multicultural cities.

Presented by author Dino Hodge with actor Terry Kenwick, staging by Suzanne Spinner and the assistance of Territory University Gay Society.

TICKETS \$4 AND \$3 CONCESSION AT THE DOOR
Bookings : telephone BROWNS MART 815522

A 1993 FRINGE FESTIVAL EVENT

NAKED TERRITORY

Cyclone Productions presents

His Own Special Friend

a two-man Read Presentation by Darwin author
Dino Hodge

In conjunction with the show
will be an exhibition of

Male Nudes and Territory Landscapes

by

Ian Hanse

Exhibition opens 7.30pm

Performance at 8.30pm

Drinks and copies of the book "Did you meet any
Maagas?" available.

Tickets \$8.00 and \$5.00 concession.

3 NIGHTS ONLY, DEC 9, 10, 11

BROWN'S MART

Bookings on 81 5522.

107692v3

Gabrielle Forsyth's lighting career began with Darwin Theatre Company's recent production *Money and Friends*, and continues with *The Tempest*. She is also enjoying lighting the Fringe Festival's *Comedy Cafe*. Gabrielle's next work is lighting design for the Women's Dance Party in July.

Lizard lurks lasciviously at Brown's Mart in many capacities as well as that of stage manager. Since he bought his Holden station wagon, Lizard has come to be better known around town.

THANK YOU to the following for their assistance and support: Florent Alcidi, Joanna Barrkman, Bessie & household, Elden Chamberlain & Brian Ash, John Hill, Carol Lunnay & John Burke, Patrick McBride, Ron McCullough, Terry Nienhuys, Mary Jane Overall & Roy Isaman, Steve Sparx, The Fringe Festival Committee, Brown's Mart, Mitre Ten for the barbeque, Delaney's for the stockwhip, Northern Territory Archives Service, and the Territory University Gay Society.

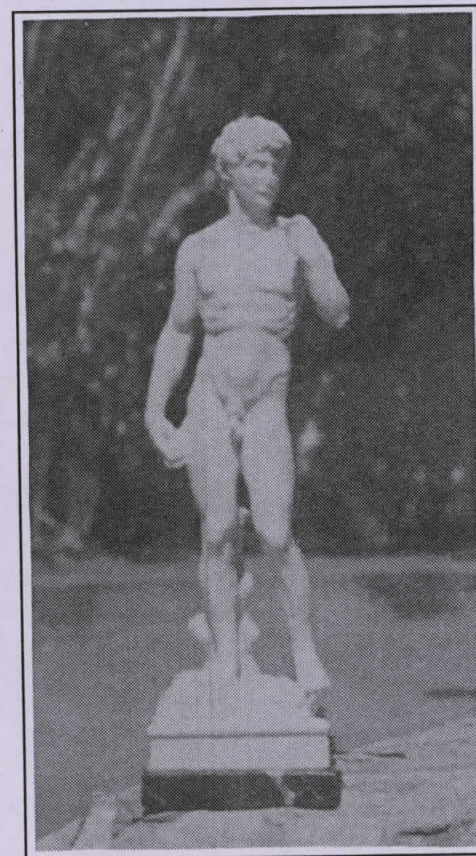
The **PINK TRIANGLE** was used in Nazi Germany as a marker to identify homosexual, most of whom were murdered in concentration camps. For many years the **PINK TRIANGLE** has been recognised internationally as a symbol of Gay community solidarity and resistance to oppression.

In recent years the **RAINBOW FLAG** has come to be globally adopted by Lesbians and Gay men as a symbol of diversity, love and life.



HIS OWN SPECIAL FRIEND

A HOMOSEXUAL HISTORY OF
THE NORTHERN TERRITORY



BY
DINO HODGE

His Own Special Friend explores the humour and courage with which homosexual men in the Northern Territory have faced denial and challenges to their love.

After talking about doing it for the better part of a decade, Dino Hodge began researching the history of the Northern Territory's Gay community three years ago, motivated in part by the threat A.I.D.S. poses to the community.

The Territory traditionally has been regarded as an outback frontier with a macho image and a gender imbalance. This work provides an entertaining and factual insight into the historical context in which a contemporary gay community has developed.

Most of the historical records Dino has collected are oral history interviews from Darwin. Some of these interviews will be released as a book later this year. A significant amount of the archival material refers to centres throughout the Northern Territory.

Themes identified include pioneering experiences, homosexuality in traditional and urban Aborigines, World War II experiences, legal issues, the post-war aviation industry, and the emergence of a gay community and broader understanding and acceptance of homosexuality.

His Own Special Friend draws on both archival and oral history material, covering the period of first European settlement up to and including the 1970's.

HIS OWN SPECIAL FRIEND

A HOMOSEXUAL HISTORY OF THE NORTHERN TERRITORY

Premiered on 12th June 1993 at Brown's Mart for the Fringe Festival.

Writer/Performer: Dino Hodge has previously published articles on the arts, on ethnic and multicultural affairs, and on human rights law. *His Own Special Friend* is his first play, and draws on material collected for his book on the history of Darwin's gay community, *Did You Meet Any Malagas?* due for release later this year.

Performer: Terry Kenwick is a fantastic landscape gardener who also performs and directs with Darwin Theatre Company. He enjoys a bottle of good red wine when designing posters.

Performer: Lawrence McGuire was brought to Darwin by Territory University Gay Society to produce, direct, stage manage and sing in their Dance Parties. He draws his inspiration from watching *Hey Hey Its Saturday* in between videos.

Performer: Darren Venn has just returned from touring with the *Kununurra Ice Follies*. He has worked extensively with the Jabiru Chorale, and next December premieres his extravaganza *Bridget goes to Sea World Central Australia*.

Designer and Dramaturg: Suzanne Spinner is better known as a playwright, but she has designed many of her own productions including *Running Up A Dress*, *Dragged Screaming to Paradise*, *The Inkgata's Wife*, and *Radio for Help*. She is currently writing *Claim*, under commission to Sydney Theatre Company, and is the Co-ordinator/dramaturg of the forthcoming National Young Playwrights Festival.



HIS OWN SPECIAL FRIEND

STAGING IDEA - somewhere between a TV Chat Show Host and his Guest, a Brechtian Cabaret, Beckett's Krapps Last Tape and the real situation from which it's derived the Oral Historian and his Interviewee

SET

Two matching collapsible camping Chairs painted Bougainvillea Pink and Black

Two Polystyrene Eskies painted Bougainvillea Pink which contain the hand props and serve as low tables beside the chairs.

Altar to NT Manhood- a fetish object/sacrificial altar: the base is a black Weber BBQ which can be wheeled on. On it arranged as votive offerings are:
a giant NT Stubbie bottle,
a pair of Buffalo horns,
a pair of RM Williams Boots,
BBQ Tools and some fake raw meat - giant T Bone Steaks would be perfect,
an aerosol container of Old Spice Aftershave,
two leather tooled stubbie holders,
a stockwhip and a couple of rubber snakes
and the whole thing is festooned and entwined with pink bougainvillea - ideally plastic!

Two flats painted white and in black lettering and pink highlights, the name of the show, HIS OWN SPECIAL FRIEND.
OR off white curtains
OR two sets of old style Venetian blinds -off white or duck egg Blue
OR collapsible wooden garden Lattice painted off white
Whatever forms the backdrop- it is arranged to form an intimate TV set, with the altar in the middle and the chairs and Eskies at either side, flanking the Altar.

Large silk Rainbow Gay Flag

Perishables- Condoms, Minties and Bougainvillea Petals
Old Spice After Shave - ideally an aerosol

Material from the NT Uni Gay Society to decorate the Foyer, (Banner) Bar (masks) and the Bamboo (flags and pennants) outside the theatre, in the courtyard area.

LIGHTING

Three spots - neutral, pink and blue gels

neutral - for DINO throughout

pink -for TERRY when he's reading the interviewees words

blue- for when TERRY is reading what was said about homosexuals by other commentators.

In the opening the Altar is bathed in blue light, but at the end it should be doused in Pink light, lit somehow from inside or underneath

COSTUMES-----

CONCEPT: that the two performers share one complete mens evening outfit, and there are discreet touches of The Other/ image is Magritte painting...

COLOURS: Black, White and Bougainvillea/Shocking Pink as the keynote colour

DINO- The Interviewer/Host-----

Black long pants (half the Evening suit)

Braces over a bare chest

Bougainvillea Pink or Black Bow Tie and White long

Evening scarf

White Evening gloves

Black evening pumps- patent leather or Black and White would be best

Black Fishnet Stockings

PROPS- Clipboard and Pen

- Cassette Recorder, lapel mikes, headphones, spare cassettes.

TERRY- The Guest/ The Interviewee/ The Commentator-----

Black evening Jacket or Black Waistcoat(the other half of the suit)

White Chesty Bond Singlet

Black Silk Boxer Shorts

Bougainvillea Pink or Black Satin Cumberband

Long Black Socks and Mens Garters

Black evening shoes

PROPS

Water Jug and glasses

DRAMATURGY-----

CUTS- Reduce by at least a third the two long oral history extracts- the WW11 (Pseudonym John) and the Aboriginal Man(Gurra) , and take out the analysis by Jim Wafer of stages of impacts of colonial culture.
The aim is to keep the show to about one hour.

INSERTS/ ADDITIONS- Tape identifications- "This is Dino Hodge, Darwin , June 1993 etc Tape number one etc" for the beginning of each tape, spoken as the new tape is put in or turned over. Each tape is about 20 minutes long, so these idents will happen in real time when the tape clicks and runs out.
Plus individual idents for the six main interviewees, "Interview with Pseudonym John, Darwin, Jan 12,1991..."

SEQUENCE-----

OPENING

Flats OR Venetians OR Curtains OR Lattice is preset

LAWRENCE and DARREN dressed in clone drag (white T shirts and Levis) enter carrying a fold up chair and an Esky each, as if they are going camping or arriving at a typical Top End BBQ.

They put the Eskies down and snap out the folding chairs, position them.

LAWRENCE places the first Esky to the left of the left chair, and DARREN places the second Esky to the right of the right chair.

From the second esky, LAWRENCE takes a Water jug and two glasses and place them on top of the Esky/table

From the first Esky DARREN takes the cassette recorder, headphones and lapel mikes, spare cassettes and positions them on the Esky/table.

They exit, and return wheeling on the Barbeque Altar

They position it centrestage between the chairs.

From the altar they take a bottle or can of Old Spice Aftershave which they spray around the stage, then they replace it on the Altar.

They take up a position behind the chairs like waiters in expectation of VIPs

Lights come up on the Altar, it is pulsating in blue light.

DINO and TERRY enter from different sides- behind the flats, and sit down in the chairs.

LAWRENCE assists DINO with the cassette player and pins the mike on TERRY, while DARREN pours the glasses of water for TERRY and DINO.

When everything is completely ready, LAWRENCE and DARREN take their bow and exit separately -behind the flat.

SHOW proceeds without interval

ENDING

DINO's final line about gaining the love and understanding of the people of Darwin was to become the trademark of the Gay community beyond the 70s.

Lights END

TERRY and DINO take their bow to tumultuous applause and exit, leaving the Altar spotlit , this time in Pink.

Then suddenly as soon as they are off, The Rainbow flag drops from the rafters and unfurls ideally it should fall in such a way as to mask the altar or form a new backdrop for the Altar.

LAWRENCE and DARREN return, run in, dressed as before in Clone Drag (Blue Levis and White T shirts) and take up Centre stage and sing:

"I DON'T KNOW HOW TO LOVE HIM"

Over tumultuous applause at the end, condoms and Minties shower down on the audience!!!!